

## Inaugural Release of Initial Innovation Indexes for California

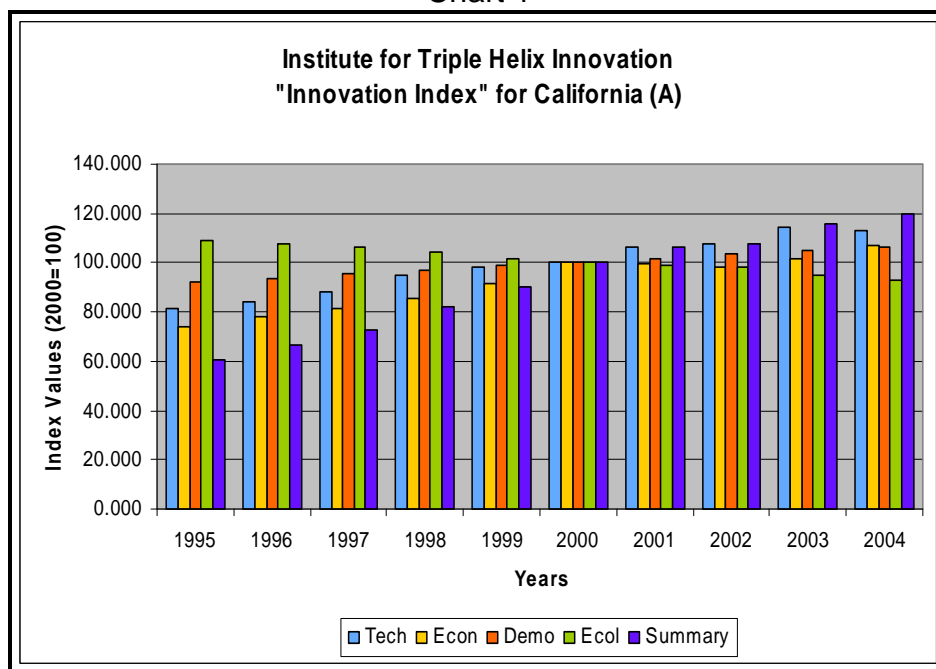
The Institute for Triple Helix Innovation conducted its inaugural release of Innovation Indexes, which indicate innovation potential for six Pacific Region locales: The states of California, Hawaii, and Washington, and the nations of China, Japan, and Singapore. The Institute labels these indexes as "initial" because they are being released for the first time, and the Institute has plans to improve the indexes in the years ahead. For a detailed statement on the development of the indexes, including a methodology statement, please visit the following Web site:

<http://www.triplehelixinstitute.org/projectInfo/megatrend.html>

Innovation Indexes reflect the contributions of four categories of innovation potential: Technological (Tech), economic (Econ), demographic (Demo), and ecological (Ecol, sustainability). The base period for the indexes is 1995, their starting point; the reference period is 2000. This release reflects indexes spanning the period 1995-2004.

Chart 1 and Tables 1 and 2 provide "Version A" of the index for the State of California. They show that over the 10-year period covered, California's Innovation Index increased an average of 7.9% each year: Economic (4.3%), technological (3.7%), and demographic (1.6%) categories contributed positively, while the ecological (sustainability (-1.8%)) category contributed negatively.

Chart 1



Copyright 2007 - The Institute for Triple Helix Innovation

The Institute allows the use and reproduction of this document for noncommercial purposes but require that the author, the title, the Institute, and the document URL be cited clearly. Contact The Institute for Triple Helix Innovation to request permission to reproduce for commercial purposes.

Table 1.—Innovation Index for California (Version A)  
(Index levels, 2000=100)

	Tech	Econ	Demo	Ecol	Summary
1995	81.479	73.705	92.389	108.997	60.460
1996	84.361	78.021	93.629	107.969	66.522
1997	87.918	81.612	95.340	106.427	72.791
1998	95.113	85.620	97.137	104.113	82.352
1999	98.278	91.596	98.803	101.542	90.310
2000	100.000	100.000	100.000	100.000	100.000
2001	106.514	99.739	101.682	98.715	106.635
2002	107.484	98.462	103.412	98.458	107.754
2003	114.263	101.623	104.959	95.116	115.925
2004	113.091	106.888	106.617	92.802	119.604

Table 2.—Innovation Index for California (Version A)  
(Percent changes)

	Tech	Econ	Demo	Ecol	Summary
1996	3.5	5.9	1.3	-0.9	10.0
1997	4.2	4.6	1.8	-1.4	9.4
1998	8.2	4.9	1.9	-2.2	13.1
1999	3.3	7.0	1.7	-2.5	9.7
2000	1.8	9.2	1.2	-1.5	10.7
2001	6.5	-0.3	1.7	-1.3	6.6
2002	0.9	-1.3	1.7	-0.3	1.0
2003	6.3	3.2	1.5	-3.4	7.6
2004	-1.0	5.2	1.6	-2.4	3.2
Average	3.7	4.3	1.6	-1.8	7.9

The “Version A” index is computed by summing the contributions of the aforementioned four categories of innovation potential; i.e., each category is fully reflected in the index. The “Version B” index is computed by averaging the contributions of the categories, reflecting the central tendency of the categories.

The Institute plans to release new and revised Innovation Indexes through the year 2007 in July of 2008.

For answers to questions about the Innovation Indexes or to provide comments, please contact: Dr. Brooks Robinson, Senior Economist for Research, Institute for Triple Helix Innovation, John A. Burns School of Medicine, Medical Education Building, Suite 212, 651 Ilalo Street, Honolulu, HI 96813, [brooks.robinson@pacifichui.org](mailto:brooks.robinson@pacifichui.org), 808.433.1085 (Telephone), 808.433.1920 (Facsimile).

--##--

Copyright 2007 - The Institute for Triple Helix Innovation

The Institute allows the use and reproduction of this document for noncommercial purposes but require that the author, the title, the Institute, and the document URL be cited clearly. Contact The Institute for Triple Helix Innovation to request permission to reproduce for commercial purposes.