

Inaugural Release of Initial Innovation Indexes for **Singapore**

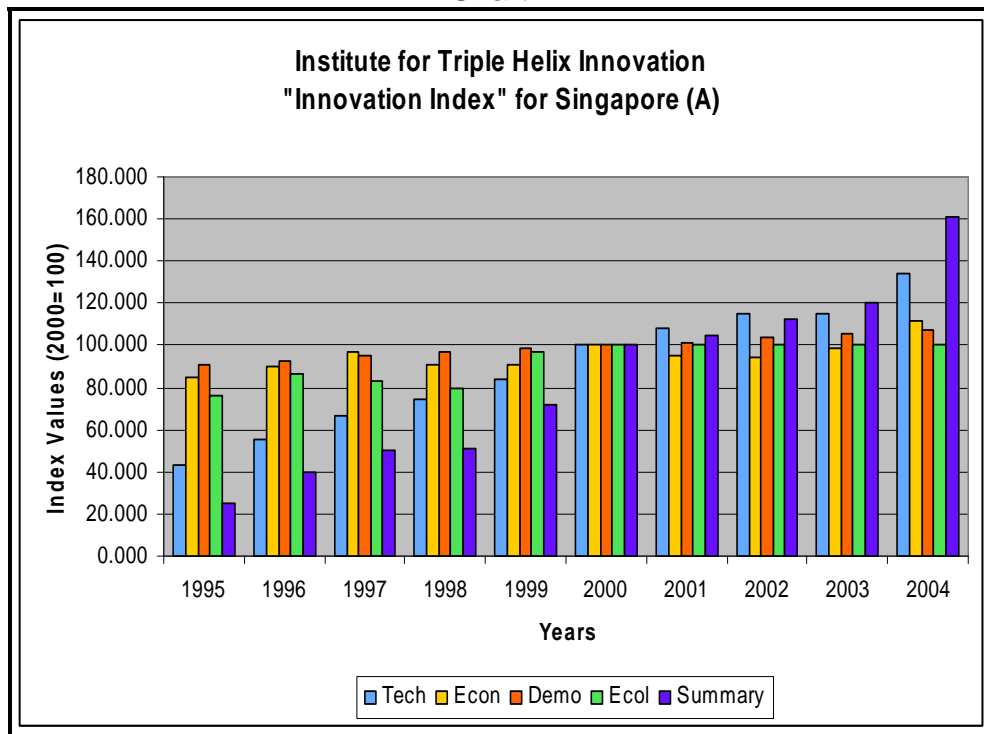
The Institute for Triple Helix Innovation conducted its inaugural release of Innovation Indexes, which indicate innovation potential for six Pacific Region locales: The states of California, Hawaii, and Washington, and the nations of China, Japan, and Singapore. The Institute labels these indexes as “initial” because they are being released for the first time, and the Institute has plans to improve the indexes in the years ahead. For a detailed statement on the development of the indexes, including a methodology statement, please visit the following Web site:

<http://www.triplehelixinstitute.org/projectInfo/megatrend.html>

Innovation Indexes reflect the contributions of four categories of innovation potential: Technological (Tech), economic (Econ), demographic (Demo), and ecological (Ecol, sustainability). The base period for the indexes is 1995, their starting point; the reference period is 2000. This release reflects indexes spanning the period 1995-2004.

Chart 1 and Tables 1 and 2 provide “Version A” of the index for Singapore. They show that over the 10-year period covered, Singapore’s Innovation Index increased an average of 24.4% each year: Technological (13.7%), economic (3.4%), ecological (sustainability (3.4%)), and demographic (1.8%).

Chart 1



Copyright 2007 - The Institute for Triple Helix Innovation

The Institute allows the use and reproduction of this document for noncommercial purposes but require that the author, the title, the Institute, and the document URL be cited clearly. Contact The Institute for Triple Helix Innovation to request permission to reproduce for commercial purposes.

Table 1.—Innovation Index for Singapore (Version A)
(Index levels, 2000=100)

	Tech	Econ	Demo	Ecol	Summary
1995	43.394	84.460	91.162	75.862	25.038
1996	55.762	90.307	92.949	86.207	40.142
1997	66.543	97.249	94.777	82.759	50.522
1998	74.010	91.024	96.695	79.310	51.420
1999	83.714	90.716	98.385	96.552	71.966
2000	100.000	100.000	100.000	100.000	100.000
2001	108.236	94.808	101.670	100.000	104.328
2002	114.740	94.560	103.591	100.000	112.395
2003	115.246	98.825	105.446	100.000	120.095
2004	134.419	111.813	107.089	100.000	161.220

Table 2.—Innovation Index for Singapore (Version A)
(Percent changes)

	Tech	Econ	Demo	Ecol	Summary
1996	28.5	6.9	2.0	13.6	60.3
1997	19.3	7.7	2.0	-4.0	25.9
1998	11.2	-6.4	2.0	-4.2	1.8
1999	13.1	-0.3	1.7	21.7	40.0
2000	19.5	10.2	1.6	3.6	39.0
2001	8.2	-5.2	1.7	0.0	4.3
2002	6.0	-0.3	1.9	0.0	7.7
2003	0.4	4.5	1.8	0.0	6.9
2004	16.6	13.1	1.6	0.0	34.2
Average	13.7	3.4	1.8	3.4	24.4

The “Version A” index is computed by summing the contributions of the aforementioned four categories of innovation potential; i.e., each category is fully reflected in the index. The “Version B” index is computed by averaging the contributions of the categories, reflecting the central tendency of the categories.

The Institute plans to release new and revised Innovation Indexes through the year 2007 in July of 2008.

For answers to questions about the Innovation Indexes or to provide comments, please contact: Dr. Brooks Robinson, Senior Economist for Research, Institute for Triple Helix Innovation, John A. Burns School of Medicine, Medical Education Building, Suite 212, 651 Ilalo Street, Honolulu, HI 96813, brooks.robinson@pacifichui.org, 808.433.1085 (Telephone), 808.433.1920 (Facsimile).

--##--