

## Inaugural Release of Initial Innovation Indexes for China

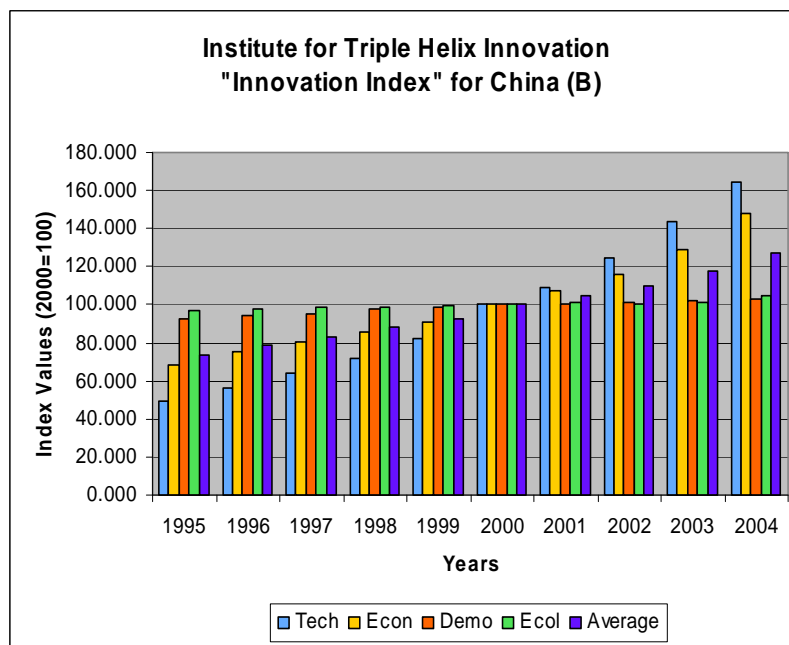
The Institute for Triple Helix Innovation conducted its inaugural release of Innovation Indexes, which indicate innovation potential for six Pacific Region locales: The states of California, Hawaii, and Washington, and the nations of China, Japan, and Singapore. The Institute labels these indexes as “initial” because they are being released for the first time, and the Institute has plans to improve the indexes in the years ahead. For a detailed statement on the development of the indexes, including a methodology statement, please visit the following Web site:

<http://www.triplehelixinstitute.org/projectInfo/megatrend.html>

Innovation Indexes reflect the contributions of four categories of innovation potential: Technological (Tech), economic (Econ), demographic (Demo), and ecological (Ecol, sustainability). The base period for the indexes is 1995, their starting point; the reference period is 2000. This release reflects indexes spanning the period 1995-2004.

Chart 1 and Tables 1 and 2 provide the “Version B” index for China. They show that over the 10-year period covered, China’s Innovation Index increased an average of 6.2% each year. The technological (14.4%) and economic (9.0%) categories reflected increases that were higher than the average, while the demographic (1.2%) and ecological (sustainability) (0.9%) categories reflected increases that were lower than the average increases.

Chart 1



Copyright 2007 - The Institute for Triple Helix Innovation

The Institute allows the use and reproduction of this document for noncommercial purposes but require that the author, the title, the Institute, and the document URL be cited clearly. Contact The Institute for Triple Helix Innovation to request permission to reproduce for commercial purposes.

Table 1.—Innovation Index for China (Version B)  
(Index levels, 2000=100)

	Tech	Econ	Demo	Ecol	Average
1995	49.180	68.072	92.570	96.492	73.970
1996	56.307	75.019	93.997	97.455	78.889
1997	63.767	80.601	95.115	98.659	83.353
1998	71.880	85.946	97.364	98.968	87.854
1999	82.055	91.226	98.826	99.381	92.610
2000	100.000	100.000	100.000	100.000	100.000
2001	108.950	107.469	100.257	100.928	104.329
2002	124.260	116.369	101.167	99.966	109.961
2003	143.492	128.609	101.888	101.616	117.556
2004	164.841	147.684	102.623	104.780	127.174

Table 2.—Innovation Index for China (Version B)  
(Percent changes)

	Tech	Econ	Demo	Ecol	Average
1996	14.5	10.2	1.5	1.0	6.7
1997	13.2	7.4	1.2	1.2	5.7
1998	12.7	6.6	2.4	0.3	5.4
1999	14.2	6.1	1.5	0.4	5.4
2000	21.9	9.6	1.2	0.6	8.0
2001	9.0	7.5	0.3	0.9	4.3
2002	14.1	8.3	0.9	-1.0	5.4
2003	15.5	10.5	0.7	1.7	6.9
2004	14.9	14.8	0.7	3.1	8.2
Average	14.4	9.0	1.2	0.9	6.2

The “Version B” index is computed by averaging the contributions of the aforementioned four categories of innovation potential, reflecting their central tendency. The “Version A” index is computed by summing the contributions of the categories; i.e., each category is fully reflected in the index.

The Institute plans to release new and revised Innovation Indexes through the year 2007 in July of 2008.

For answers to questions about the Innovation Indexes or to provide comments, please contact: Dr. Brooks Robinson, Senior Economist for Research, Institute for Triple Helix Innovation, John A. Burns School of Medicine, Medical Education Building, Suite 212, 651 Ilalo Street, Honolulu, HI 96813, [brooks.robinson@pacifichui.org](mailto:brooks.robinson@pacifichui.org), 808.433.1085 (Telephone), 808.433.1920 (Facsimile).

--##--