

First Annual

# Triple Helix Summit

February 12 – 13, 2007



University of Hawaii • East West Center • Hawaii Imin International Conference Center • Honolulu, Hawaii

---

# Community of Practice Panel

---

An Overview of the CoP Concept

Leigh W. Jerome, Ph.D.



# Regional Innovation

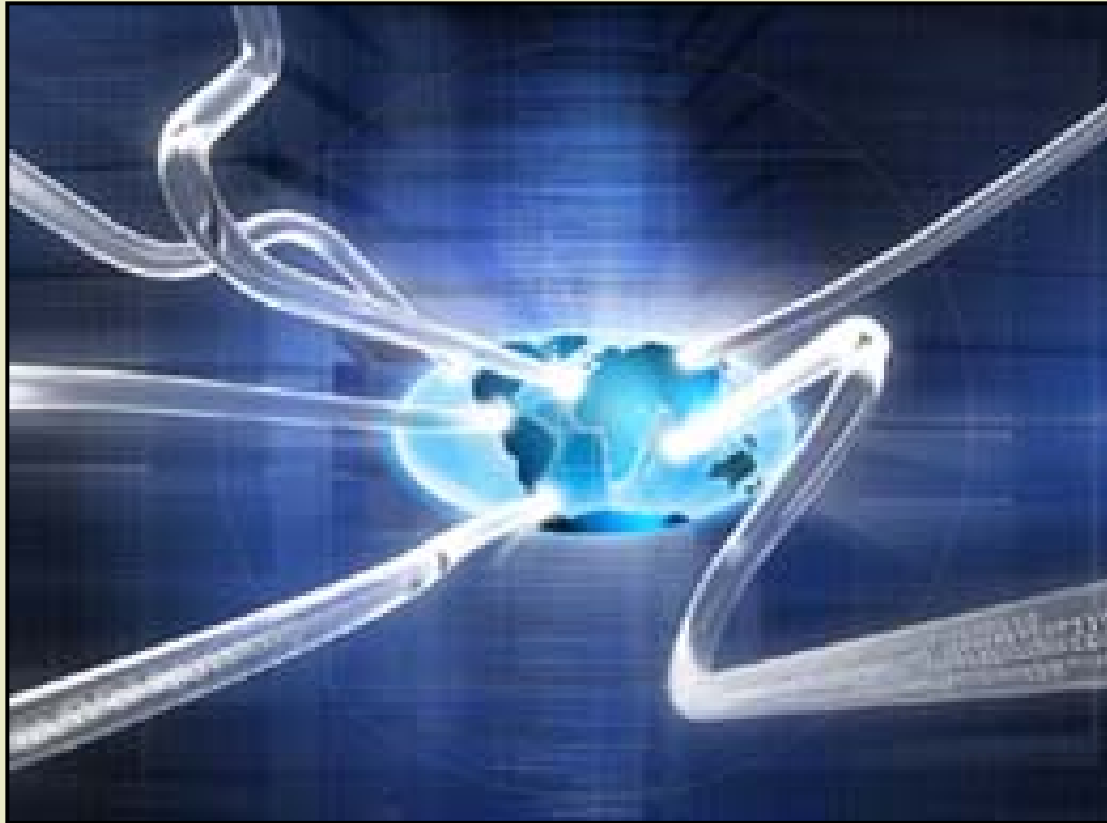


## Essential components of regional innovation systems:

- **Clustering** – A geographic concentration of competing and cooperating ventures that maximize flow of information and ideas, collaborations and resources (e.g. Silicon Valley).
- **Knowledge Spillovers** – Knowledge is difficult to contain and may thus spill over to benefit others who are vigilant and able to recognize its potential.
- **Absorptive Capacity** – An organization's ability to develop or adopt innovations, perceive opportunities and, use the information to develop products or processes.



# Knowledge Flows



*"We are in the midst of a growing preeminence of knowledge capitalization when economic growth depends on developing new cycles and structures of innovation."*

(Sutz, 1998)



# Interdisciplinarity



***“Innovation increasingly takes place at the interfaces such that partnerships that straddle the politics/science boundaries can internalize flexibility and innovation.” (Leydesdorff & Etzkowitz, 2001)***



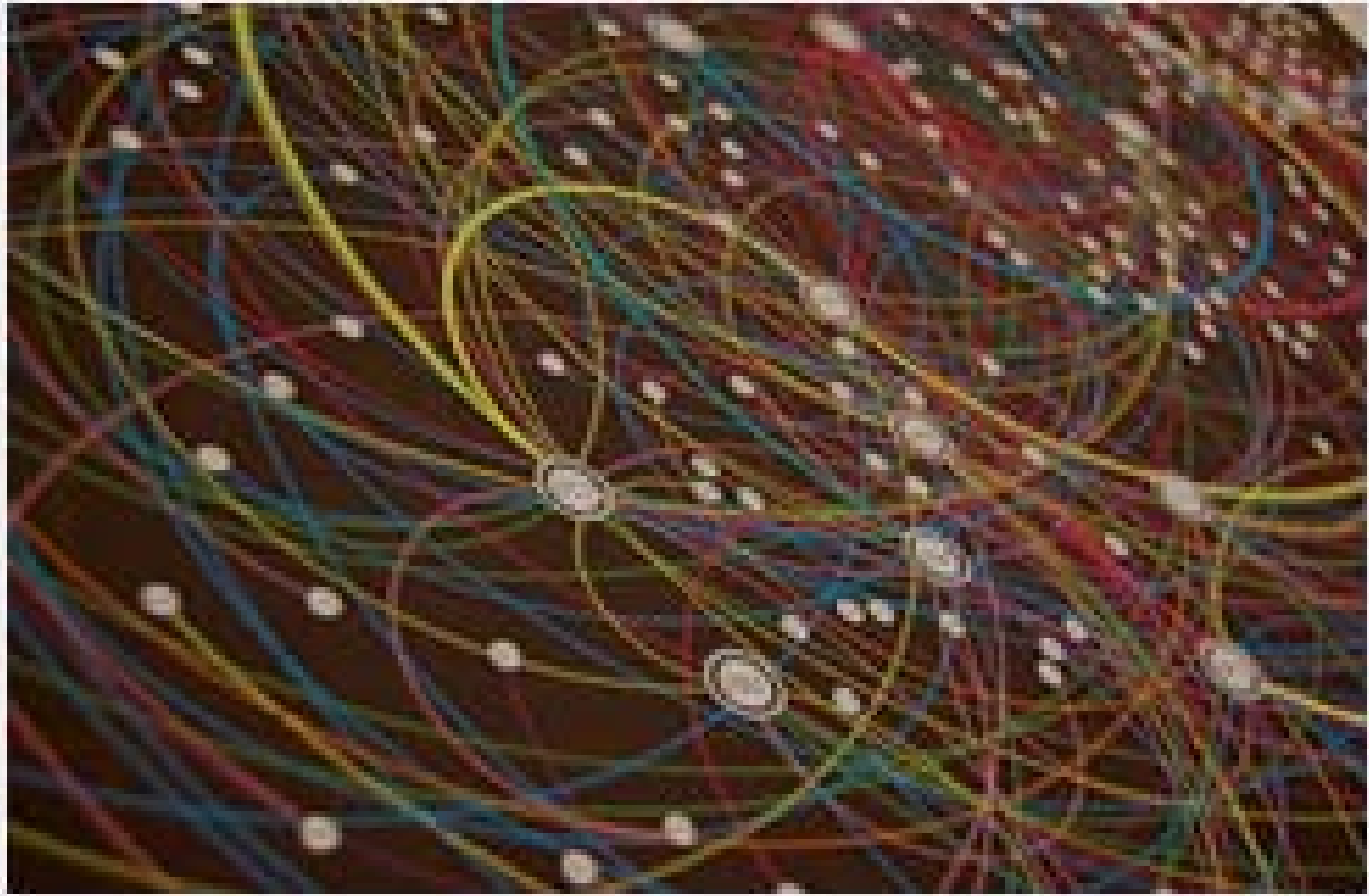
# Community of Practice



# Social Capital



# Distributed CoP





# Triple Helix CoP

*The Triple Helix Community of Practice will work to establish a mutual language for cross-disciplinary, cross-cultural, and cross-organization research and to promote a virtuous circle of knowledge diffusion.*



---

# Community of Practice Panel

---

